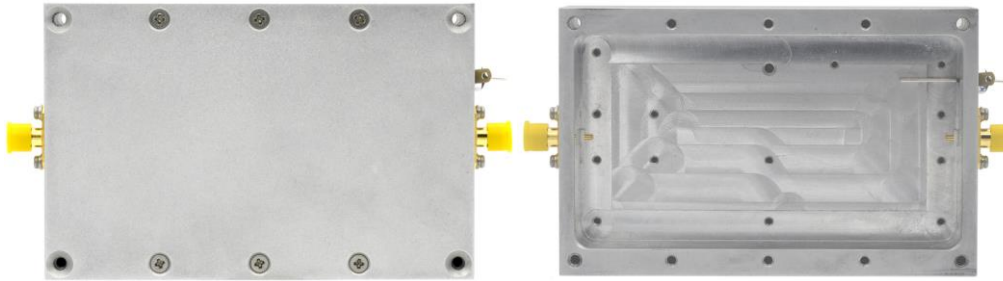


RF HOUSINGS

The TBRFH5 housing is ideal for RF building blocks such as amplifiers or similar. The housing is milled from aluminium and equipped with SMA-female connectors and a feed through capacitor for the power supply line.



TBRFH5

TBRFH5, interior

1 Technical data

Part #	Outer dimensions [mm]	Inner dimensions [mm]	Material	Surface finishing	RF connectors	Detail	Weight [g]
TBRFH5	68 x 106 x 32	54 x 98 x 22	Alu A6061	Sandblasted	SMA-Female	Feed through capacitor, 10nF, 50V	380

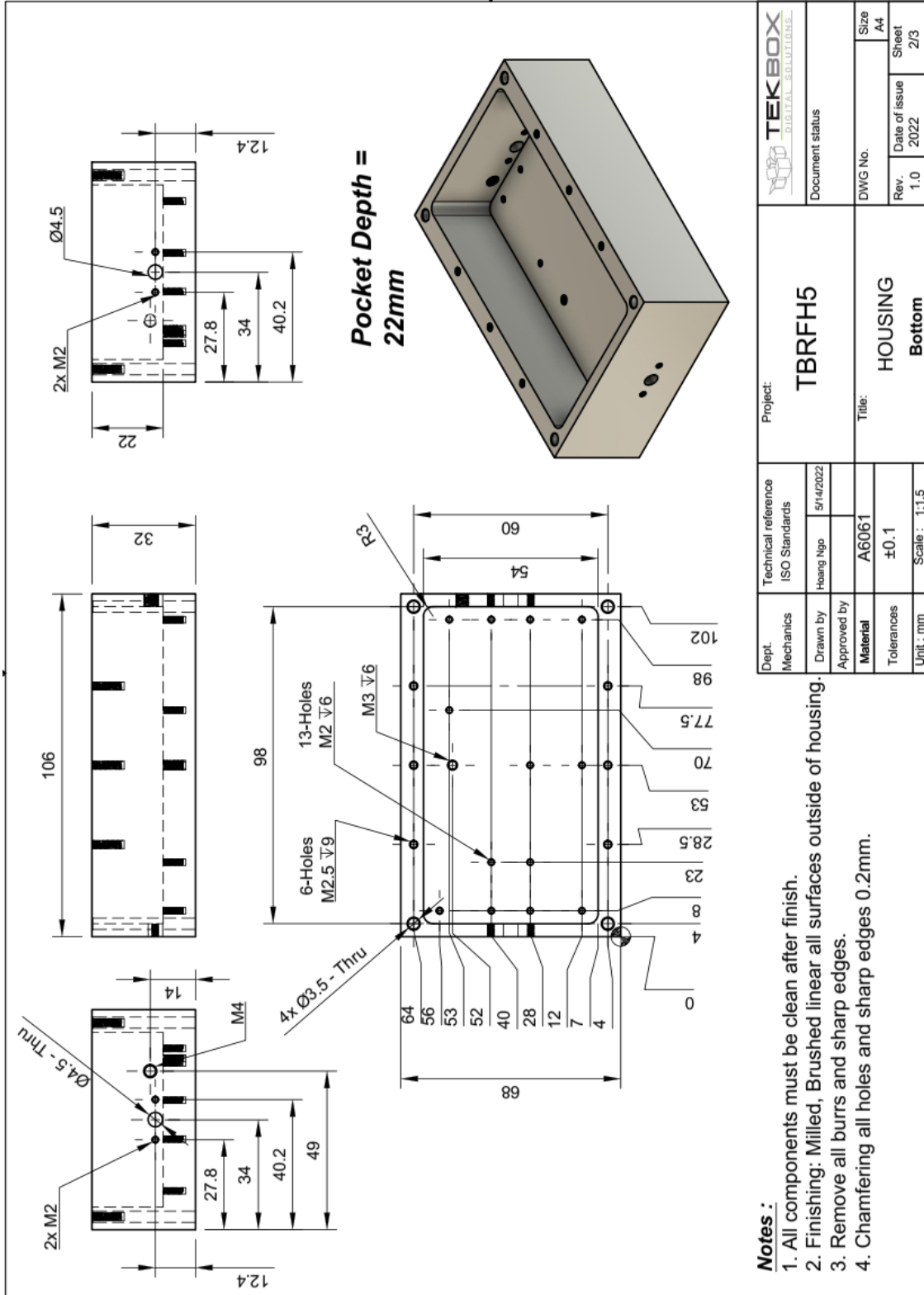
2 Customization

Contact us, if you need customized housings. Following details can be customized, depending on ordering volume:

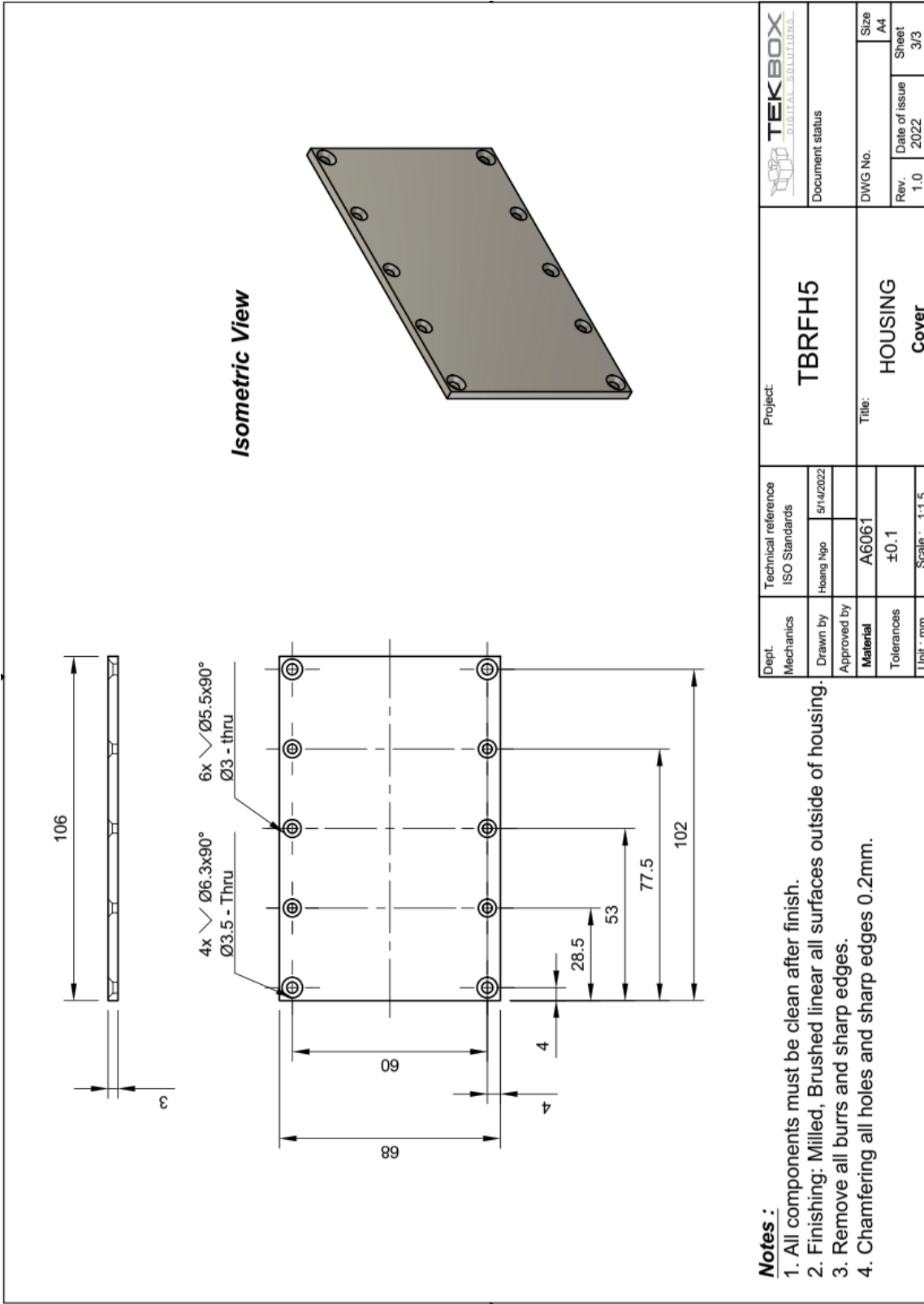
- RF connectors
- Absorbing foam
- Position and number of feed-through capacitors
- Laser engraving
- Surface finishing

RF HOUSINGS

3 Mechanical drawings



RF HOUSINGS

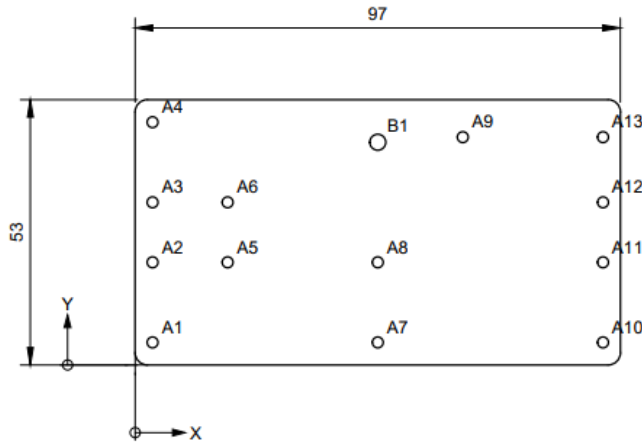


Dept. Mechanics	Technical reference ISO Standards	Project:	
		TBRFH5	
Drawn by	Hoang Ngo	DWG No.	Rev.
Approved by			1.0
Material	A6061	Date of issue	2022
Tolerances	±0.1	Sheet	3/3
Unit : mm	Scale : 1:1.5	Size	A4
Title:		HOUSING Cover	

- Notes :**
1. All components must be clean after finish.
 2. Finishing: Milled, Brushed linear all surfaces outside of housing.
 3. Remove all burrs and sharp edges.
 4. Chamfering all holes and sharp edges 0.2mm.

RF HOUSINGS

*Recommended PCB Dimension
PCB thickness : 1.6mm



B1	48.5	44.5	Ø3.2
A13	93.5	45.5	Ø2.2
A12	93.5	32.5	Ø2.2
A11	93.5	20.5	Ø2.2
A10	93.5	4.5	Ø2.2
A9	65.5	45.5	Ø2.2
A8	48.5	20.5	Ø2.2
A7	48.5	4.5	Ø2.2
A6	18.5	32.5	Ø2.2
A5	18.5	20.5	Ø2.2
A4	3.5	48.5	Ø2.2
A3	3.5	32.5	Ø2.2
A2	3.5	20.5	Ø2.2
A1	3.5	4.5	Ø2.2
Hole	X Dim	Y Dim	Description
Hole Table			

4 Ordering Information

Part Number	Description
TBRFH5	68 x 106 x 32 mm RF housing, pre-assembled with SMA-female connectors and feed through capacitor

5 History

Version	Date	Author	Changes
1.0	23.08.2022	Minh Nguyen	Creation of the document
1.1	07.02.2023	Minh Nguyen	Update drawing (Add Recommended PCB dimension)